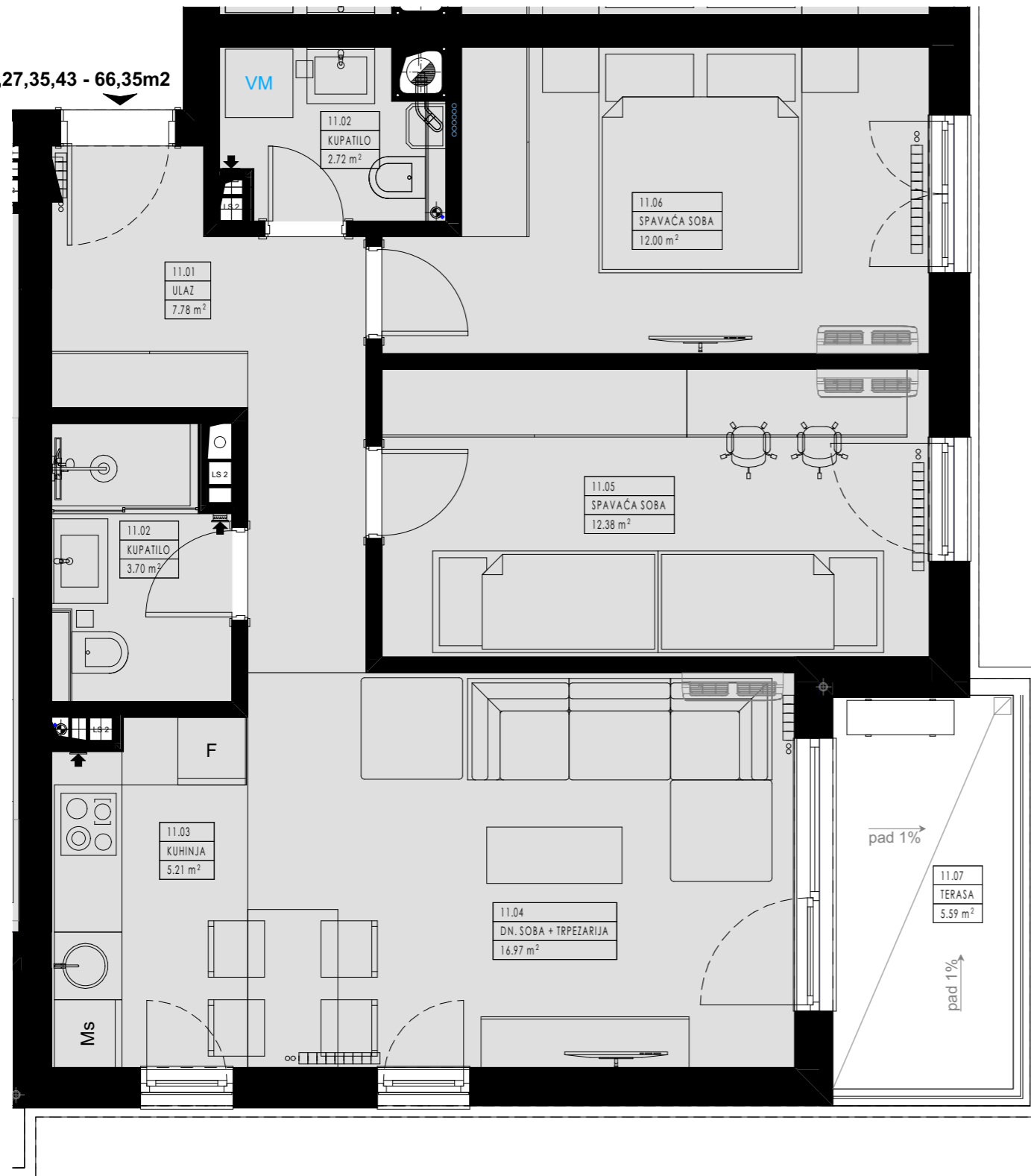


11,19,27,35,43 - 66,35m<sup>2</sup>



**LAMELA 1, STAN 11,19,27,35,43, 3.0 TROSOBAN**

11.01	ULAZ	7.78	7.78
11.02	KUPATILO	6.42	6.42
11.03	KUHINJA	5.21	5.21
11.04	DN. SOBA + TRPEZARIJA	16.97	16.97
11.05	SPAVAĆA SOBA	12.38	12.38
11.06	SPAVAĆA SOBA	12.00	12.00
11.07	TERASA	5.59	0.00
		<b>66.35 m<sup>2</sup></b>	<b>60.76 m<sup>2</sup></b>

**LAMELA 1 - TIPSKI 2.-6. SPRAT - STAN 11**