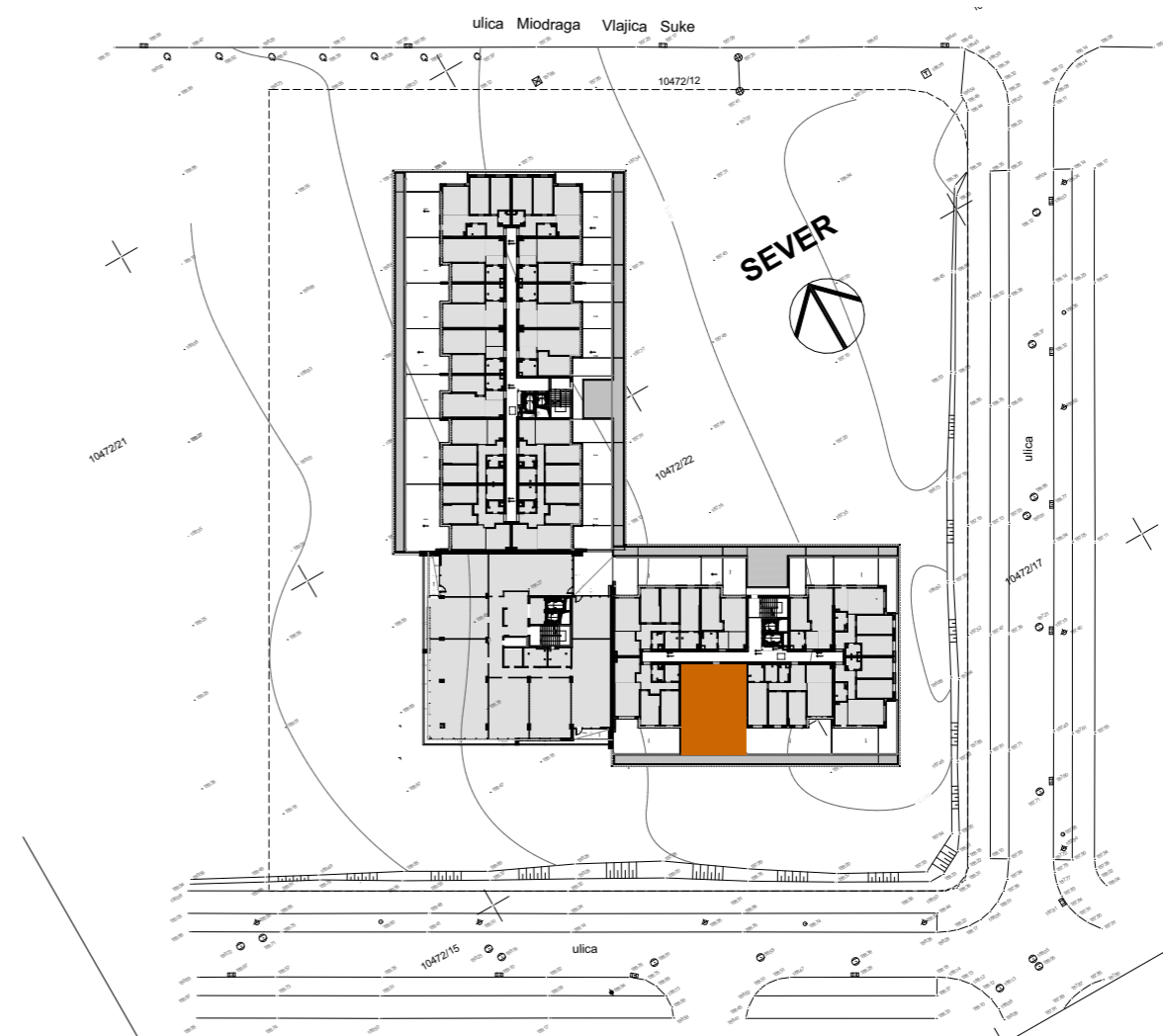


5 - 95,46m<sup>2</sup>



**LAMELA 1, STAN 05, 3.0 TROSOBAN**

05.01	ULAZ	3.77	3.77
05.02	HODNIK	5.68	5.68
05.03	TOALET	3.01	3.01
05.04	KUHINJA	6.61	6.61
05.05	DN. SOBA + TRPEZARIJA	15.31	15.31
05.06	SPAVAĆA SOBA	11.86	11.86
05.07	SPAVAĆA SOBA	11.32	11.32
05.08	KUPATILO	4.32	4.32
05.09	TERASA	33.58	0.00
		<b>95.46 m<sup>2</sup></b>	<b>61.88 m<sup>2</sup></b>

**LAMELA 1 - 1. SPRAT - STAN 05**